

INDO GERMAN INDUSTRIES

Spares under scope of supply

Deep Bhojwani

10/1/2021

Spares under our scope of supply



INDO GERMAN INDUSTRIES



Locomotive Products

- Side Bearer Pad for WAG7, WAG5, WCM6 Locomotives
- Resilient Bushings for WAG7, WAG5, WCM6 Locomotives
- Anti-vibration Rubber pad
- Suspension Springs
- All Rubber Seamless One - Piece Moulded Traction Motor Bellow
- Cleats of different types
- Liners based on Thermoplastic Polyurethane Elastomers replacing Metal liners
- Spring pad (Happy pad) for secondary suspension for Locomotives based on Thermoplastic Polyurethane Elastomers
- Bearing Adopter pad for Locomotives based on Thermoplastic Polyurethane Elastomers
- Bushes for Locomotives



There is more ... For items not listed in this Catalog inquire at
info@indogermanind.com

Spares under our scope of supply



INDO GERMAN INDUSTRIES



Freight Car / Wagon Products:

- Composite Elastomeric Pad for High Speed Bogies
- Modified Elastomeric Pad for Casnub Bogies and BOXN Wagons
- Poly Side Bearer Pad Assembly for Wagons.
- Side Bearer Pad for Casnub Bogies and BOXN Wagons
- Centre Buffer Coupler Draft Gear Rubber Spring for all types of Wagon.
- Rubber springs for MG Coupler (MCPH)
- R.F-8 Rubber Pads for High Tensile Coupler, for heavy haulage Freight Wagons.
- Centre Pivot Washer
- Thermoplastic Polyurethane Liners for BBNF Wagons
- Rubber Buffer Springs for Wagons.



There is more ... For items not listed in this Catalog inquire at
info@indogermanind.com

Spares under our scope of supply



INDO GERMAN INDUSTRIES



Passenger Car / Carriage Products:

- High Capacity Side Buffer Rubber Pads
- Silent Block for Anchor Link
- Silent Block for Centre Pivot
- Silent Block for Roll Link for Fiate Bogies
- Elastic Connection for Fiate Bogies
- Elasto Bush
- Bump Stopper
- Upper and Lower Rubber washer based on Polyurethane Elastomers



There is more ... For items not listed in this Catalog inquire at
info@indogermanind.com

Spares under our scope of supply



INDO GERMAN INDUSTRIES



LHB Suspension Components



BALL JOINT
TRACTION LEVER



AXLE BOX PIVOT
BUS



TRACTION CENTRE
ELASTIC JOINT



LATERAL BUMP
STOP



RUBBER SPRING



RUBBER PAD FOR
PRIMARY
SUSPENSION



PRIMARY BUMP
STOP



PAD FOR
SECONDARY
SUSPENSION



There is more ... For items not listed in this Catalog inquire at
info@indogermanind.com

Spares under our scope of supply



INDO GERMAN INDUSTRIES

LOCOMOTIVE PRODUCTS:



Standard Size: 460mm X
222mm X 180mm

Weight : Approx 40Kg

Standard Size: 355mm X
222mm X 165mm

Weight : Approx 25Kg

**Injection Moulded Metal Bonded
Side Bearer Rubber Pad - Used for
Secondary Suspension of Bogies in
Locomotives**

- Accommodate High Compressive & Shear Loads
- Improved riding characteristics
- Absorbs shocks, vibration
- Capability of withstanding wide temperature variation
- Almost maintenance free



There is more ... For items not listed in this Catalog inquire at
info@indogermanind.com

Spares under our scope of supply

INDO GERMAN INDUSTRIES



Standard Size: O.D 320mm
I.D 246mm Height : 149mm

Centre Bush - Used in connective device

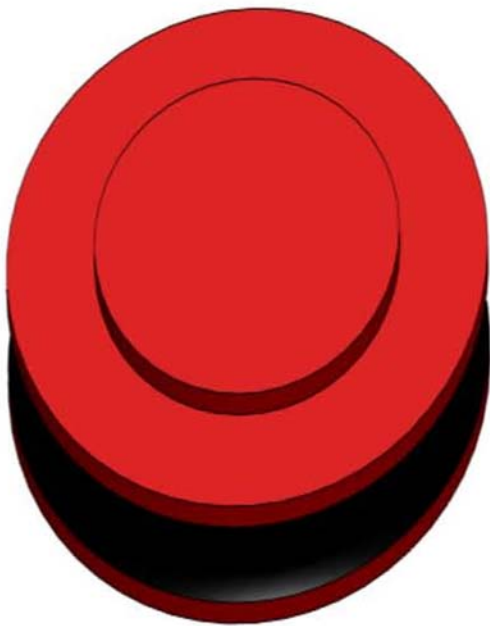
- Absorbs shocks, vibration
- Accommodate torsional & radial motion
- Simple design & operation
- Zero maintenance



There is more ... For items not listed in this Catalog inquire at
info@indogermanind.com

Spares under our scope of supply

INDO GERMAN INDUSTRIES



Standard Size: OD 205 mm
Height : 33 mm

Anti-vibration Rubber Pad – Used in conjunction with coil spring in the suspension / traction system of Diesel & Electric Locomotives

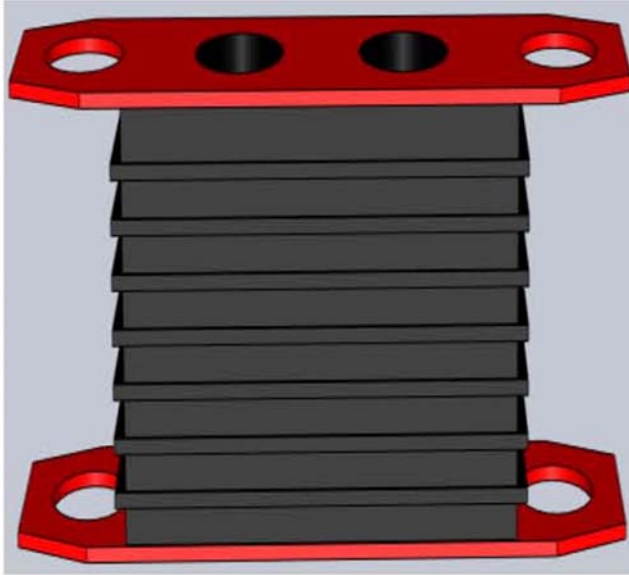
- Absorbs shocks, vibration
- Accommodate motion
- Zero maintenance
- Capable of withstanding varying temperature & weather condition without losing functional properties



There is more ... For items not listed in this Catalog inquire at
info@indogermanind.com

Spares under our scope of supply

INDO GERMAN INDUSTRIES



Standard Size: 381 mm X 102mm
X 185 mm

Bonded Rubber Sand with Mounting for Nose Suspension of Traction Motor – Used for Traction Motor suspension & held between bogie frame & traction motor nose lugs

- Efficiently isolates, shocks, vibration, accommodate motion providing support to traction motor under compressive & shear loads
- Easy assembling with ease of pre compression
- Almost maintenance free
- Capable of withstanding varying weather condition without deterioration of functional properties



There is more ... For items not listed in this Catalog inquire at
info@indogermanind.com

Spares under our scope of supply

INDO GERMAN INDUSTRIES



Standard size & weight: 445
mm x 342 mm
Weight: 5 Kg.

All Rubber Seamless One -Piece Moulded Traction Motor Bellow – Used as a type of exclusion seal to convey air from blowers inside the locomotive bodies to the commutated chamber of the traction motor

- No seam, no joint, no fabric reinforcement hence no chance of adhesion failure
- Can withstand extremely stringent condition to resist lubricating grease, oil, heat, flame & extreme weather retaining rotational stiffness
- High air impermeability
- High flexibility very easy installation
- Zero maintenance



There is more ... For items not listed in this Catalog inquire at
info@indogermanind.com

Spares under our scope of supply

INDO GERMAN INDUSTRIES



Available in Various Sizes

Cleats – Used as insulator for cables for locomotive

- High insulation resistance
- Oil & flame resistance
- Weather & ozone resistance



Break Gear Bush based on Thermoplastic polyurethane - Used in place of nylon bush in the coaches.

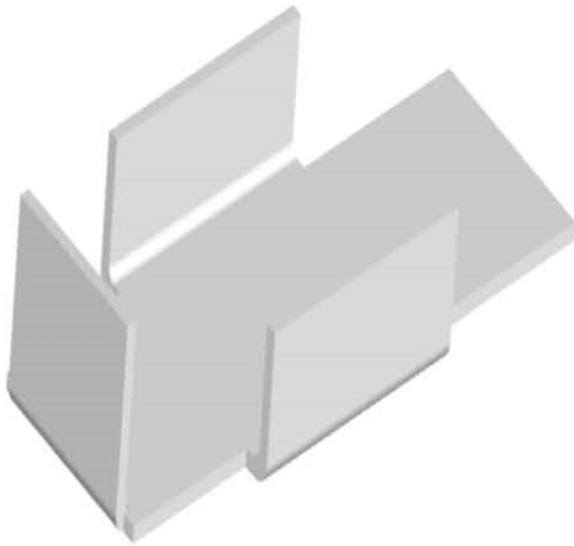
- Better performance
- Higher life
- Better dimensional control



There is more ... For items not listed in this Catalog inquire at
info@indogermanind.com

Spares under our scope of supply

INDO GERMAN INDUSTRIES



Available in Various Sizes

Liners for Bogie frame axle box & bogie frame pedestal for high-speed locomotives based on thermoplastic polyurethane elastomers

- Almost five to six times higher life than manganese steel liners
- Light weight
- Excellent friction & wear resistance with adequate flexibility
- Excellent energy absorbing capacity with required deflection
- Easy installation
- Minimum down time for replacement for damaged liner
- Zero maintenance



There is more ... For items not listed in this Catalog inquire at
info@indogermanind.com

Spares under our scope of supply

INDO GERMAN INDUSTRIES



Spring Pad (Happy Pad) for secondary suspension for locomotive – Used above & below the helical coil spring used in locomotives

- Reduced fretting enhancing the life of the coil springs
- High load bearing capacity
- Excellent wear & tear resistance
- Excellent oil resistance
- Excellent weather resistance

Standard Size : O.D 225 mm
X ID 120mm X THK 10mm



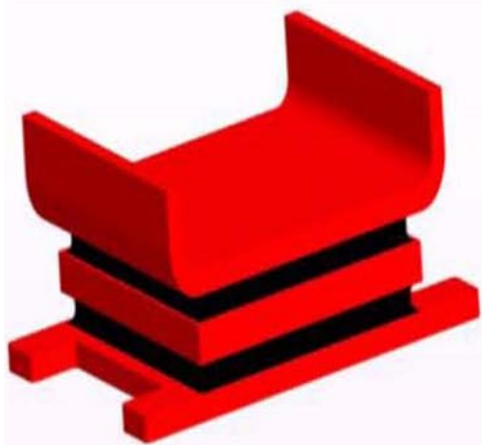
There is more ... For items not listed in this Catalog inquire at
info@indogermanind.com

Spares under our scope of supply

INDO GERMAN INDUSTRIES

FREIGHT CAR

WAGON PRODUCTS



**Standard Size: 208 mm X
178 mm**

**Injection Moulded Modified Elastomeric
pad for Casnub bogies and BOXN wagons –
Used for self steering & other freight car
bogies**

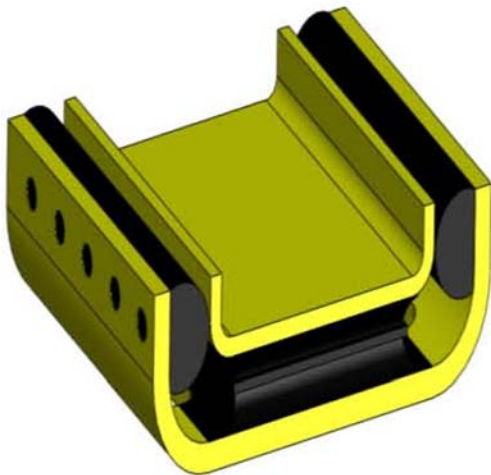
- Reduced lateral force
- Accommodate motion with out wear
- Reduced wheel wear
- Eliminate adopter crown wear
- Capable of withstanding varying temperature & weather condition without loosing the functional properties



There is more ... For items not listed in this Catalog inquire at
info@indogermanind.com

Spares under our scope of supply

INDO GERMAN INDUSTRIES



Standard Size: 251mm X 210mm

with Buffer Side Pad made of Polyurethane Elastomer

Injection Moulded Composite Elastomeric Pad For High Speed Bogies – Used in high speed, self steering freight car bogies.

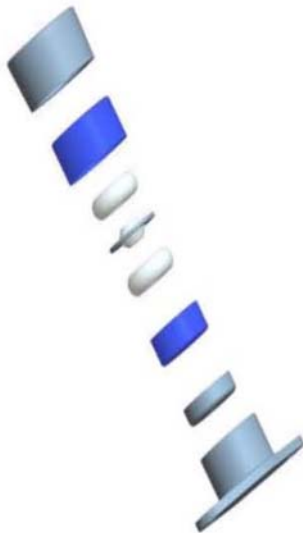
- Cushion high frequency transients originating in the wheel rail interface
- Accommodate adequate lateral motion reducing load & wear between flange & rail
- Eliminate adpater crown wear
- Accommodate longitudinal motion without damage
- Independent stiffness in all the direction lateral longitudinal & vertical
- Highly wear resistance polyurethane based side pad to accommodate and to control damaging lateral load during running
- very high reliability



There is more ... For items not listed in this Catalog inquire at info@indogermanind.com

Spares under our scope of supply

INDO GERMAN INDUSTRIES



Size : Forged Housing Base
280 mm, Top Dia 158 mm
Cast Polyurethane Rings
O.D 101 mm X I.D 40 mm
X THK 33 mm (3 Rings)
Two Partition Steel Plates In
Between the Rings.

Constant Contact Side Bearer Pad for Casnub Bogies and BOXN Wagons – Used in bogies in place of conventional Side Bearer pad based on bonded metal and rubber.

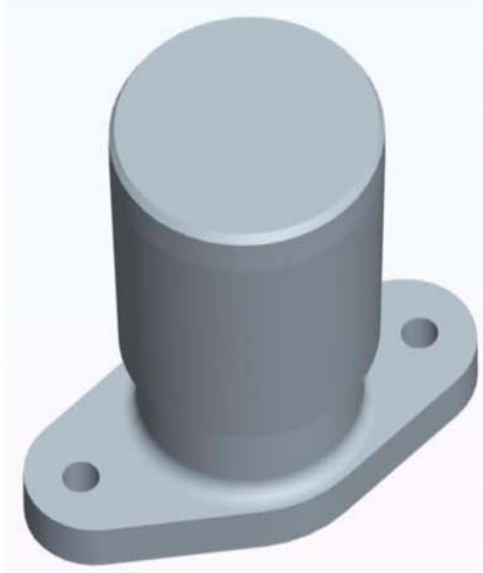
- High vertical energy absorption and excellent control of riding
- No bonding, unique design with out bonding, only polyurethane based rings in between metal plates hence no chance of bond failure resulting very high service life.
- High load bearing capacity with high reliability
- Reduction in wear of Housing and Bogie Centre Pivot



There is more ... For items not listed in this Catalog inquire at
info@indogermanind.com

Spares under our scope of supply

INDO GERMAN INDUSTRIES



- Simple design easier installation and zero maintenance
- Sleeves, Ring and Housing can be independently replaced on damaged.
- Excellent energy absorption resulting higher hunting thresholds
- Consistent performance at wide temperature range and varying weather condition
- Highly economical



Standard Size: 250 mm X 100 mm
X 117mm

Metal Bonded Side Bearer Rubber Pad -
Used for Secondary Suspension of Bogies
in Freight Car

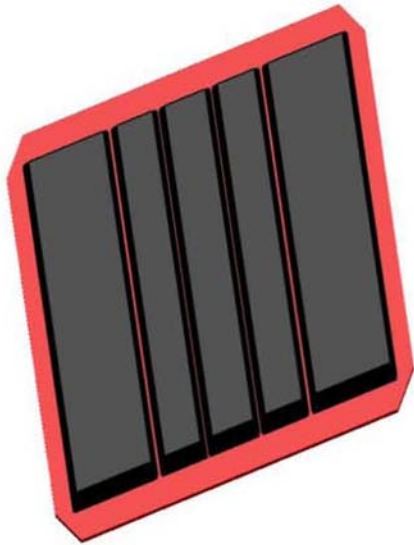
- Accommodate High Compressive & Shear Loads
- Improved riding characteristics
- Absorbs shocks, vibration
- Capability of withstanding wide temperature variation
- Almost maintenance free



There is more ... For items not listed in this Catalog inquire at
info@indogermanind.com

Spares under our scope of supply

INDO GERMAN INDUSTRIES



Standard Size: 287 mm X 197
mm X 42 mm

Centre Buffer Coupler Draft Gear Rubber Spring for all types of wagon – Used in the draft gear assembly for BG wagons having 625.5 mm 492 mm & 327 mm draft gear pockets.

- Good load deflection characteristics
- Good capacity with control travel
- Easy to installed
- No maintenance
- Ability to stand varying weather condition and wide temperature range without deterioration in functional properties



There is more ... For items not listed in this Catalog inquire at
info@indogermanind.com

Spares under our scope of supply

INDO GERMAN INDUSTRIES



Standard Size: 287 mm X 197 mm X 42 mm

Minimum Capacity: 450 Kgm for a set of two springs

Rubber springs for MG Coupler (MCPH) -
Used in the MG coupler of in place of steel spring

- Efficiently replaces steel spring
- Good capacity under specified deflection
- Easy to install and maintain
- Ability to stand varying weather condition and wide temperature range without deterioration in functional properties.



There is more ... For items not listed in this Catalog inquire at
info@indogermanind.com

Spares under our scope of supply

INDO GERMAN INDUSTRIES



Standard

Size: 286 mm X 181 mm

Miners U.S.A., R.F-8 Rubber Pads for High Tensile Coupler, Types RF-361 and SL-76 for heavy haulage freight wagons - Used in high tensile couplers for wagon.

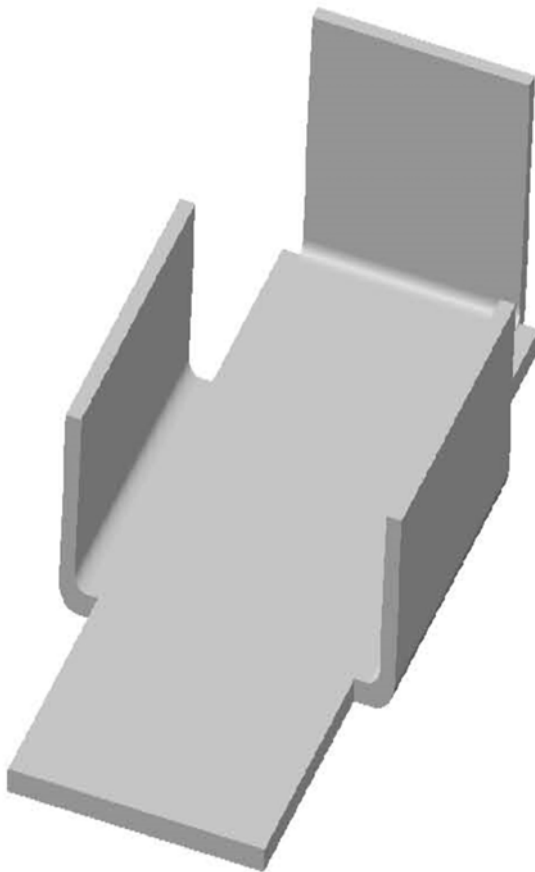
- Protect wagons from coupling shock
- No metal to metal bottoming under deflection with snubbing action
- Excellent load capacity as solid gear height
- Ability to stand varying weather condition and wide temperature range without deterioration in functional properties



There is more ... For items not listed in this Catalog inquire at
info@indogermanind.com

Spares under our scope of supply

INDO GERMAN INDUSTRIES



Thermoplastic polyurethane Liners for BHNF wagons can be efficiently used in place of thermo-set rubber strip

Much higher life and performance than thermo-set rubber strips used

Lighter weight with less thickness and better performance

Excellent friction & wear resistance with adequate flexibility

Excellent energy absorbing capacity with required deflection

Excellent oil resistance property

Easy installation

Zero maintenance



There is more ... For items not listed in this Catalog inquire at
info@indogermanind.com

Spares under our scope of supply

INDO GERMAN INDUSTRIES

Passenger Car / Carriage Products:



Standard Size: O.D 178 mm

I.D 42 X THK. 112 mm

Capacity: Minimum 1225

Kgm. for a set of 4 springs

Width high damping capacity
more than 50%

High Capacity Side Buffer Rubber pads –
Used in side buffers of ICF types of coaches

- High capacity more than 1225 kgm.
- Very high damping capacity resulting minimum damaged of buffer assembly component
- High protection of coach under frame members
- Ability to with scan high impacts at higher shunting speed
- Unique design no rubber to rubber contract
- Easy installation and zero maintenance



There is more ... For items not listed in this Catalog inquire at
info@indogermanind.com

Spares under our scope of supply

INDO GERMAN INDUSTRIES



Torsional stiffness at 8^0
Deflection :8000-1000 Kgcm,
Conical stiffness at 8^0
Deflection: 8000-1000 Kgcm,

Silent Block for Anchor Link – Used as a rubber bush fitted in ICF of coaches to facilitate adjustment and reduce noise.

- Ability to endure load under oscillating condition and during rotary movements
- No damage rubber due to excessively large rotary movement due to unique design
- Provide noiseless and comfortable riding of coaches
- Easy to install and almost zero maintenance



There is more ... For items not listed in this Catalog inquire at
info@indogermanind.com

Spares under our scope of supply

INDO GERMAN INDUSTRIES



Silent Block for Centre Pivot – Used in the center pivot of coaches

- Ability to endure load under oscillating condition and during rotary movements
- No damage rubber due to excessively large rotary movement due to unique design
- Provide noiseless and comfortable riding of coaches
- Easy to install and almost zero maintenance

Torsional stiffness at 7^0
Deflection :25000 Kgcm-
40000 Kgcm

Conical stiffness at 7^0
Deflection: 25000-40000
Kgcm,



There is more ... For items not listed in this Catalog inquire at
info@indogermanind.com

INDO GERMAN INDUSTRIES



Silent Block for Roll Link for Fiat Bogies -
Used as a rubber bush fitted in ICF of coaches to facilitate adjustment and reduce noise.

- Ability to endure load under oscillating condition and during rotary movements
- No damage rubber due to excessively large rotary movement due to unique design
- Provide noiseless and comfortable riding of coaches
- Easy to install and almost zero maintenance



There is more ... For items not listed in this Catalog inquire at
info@indogermanind.com

Spares under our scope of supply

INDO GERMAN INDUSTRIES



Elastic Connection for Fiat Bogies - Used in pairs in newly designed coaches at RCF with German technology.

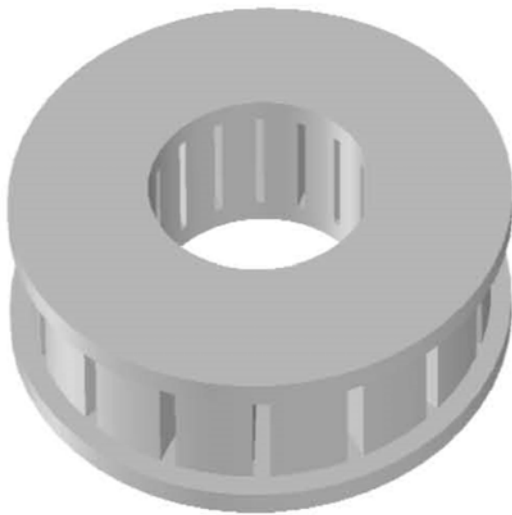
- Elastically guides the wheel set over the axle
- Protect derailment
- Controls the wear of the wheel set at high speed also in the curves
- Provide noiseless and comfortable riding of coaches
- Easy to install and almost zero maintenance



There is more ... For items not listed in this Catalog inquire at
info@indogermanind.com

Spares under our scope of supply

INDO GERMAN INDUSTRIES



Upper and Lower Rubber washer based on polyurethane elastomers - Used as primary suspension of ICF types of bogies of the BG/MG coaches and EMU coaches

- High load bearing capacity
- High shock and noise absorption
- Very good resistance to lubrication oils
- Can withstand
- Varying weather condition without losing the functional performance
- High reliability no maintenance



There is more ... For items not listed in this Catalog inquire at
info@indogermanind.com

Spares under our scope of supply

INDO GERMAN INDUSTRIES



Polyrim for Pully

Polyrim for Pully used for conveyor system of M/S NALCO for carrying BAUXITE ores from MINES to their plant in a span of 14.6 K.M over the hills & vally



Wearing Piece based Thermoplastic polyurethane - Used in Side Bearer of coaches

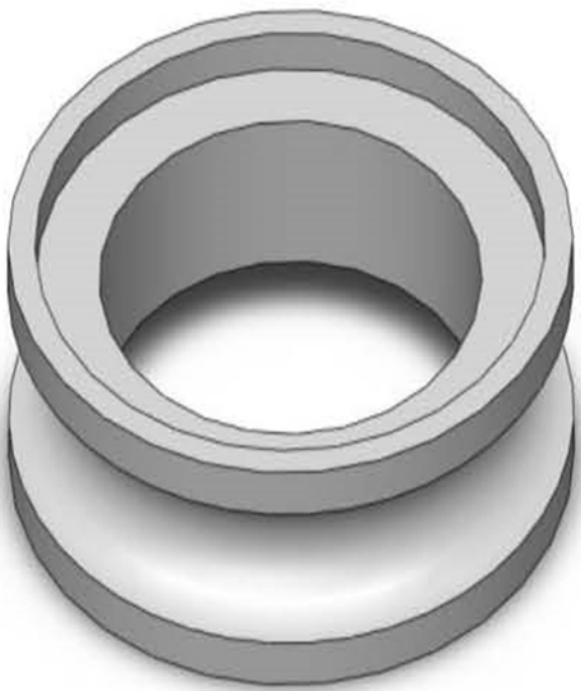
- Light weight with high load bearing capacity
- Less costly than metal
- Good oil and weather resistance
- High wear and tear and resistance



There is more ... For items not listed in this Catalog inquire at info@indogermanind.com

Spares under our scope of supply

INDO GERMAN INDUSTRIES



PU PULLY

Polyrim for Pully used for conveyor system of M/S NALCO for carrying BAUXITE ores from MINES to their plant in a span of 14.6 K.M over the hills & vally



There is more ... For items not listed in this Catalog inquire at info@indogermanind.com

Spares under our scope of supply

INDO GERMAN INDUSTRIES



Polyrim for Pully used for conveyer system of M/S NALCO for carrying BAUXITE ores from MINES to their plant in a span of 14.6 K.M over the hills & vally

PU PULLY



There is more ... For items not listed in this Catalog inquire at info@indogermanind.com

Spares under our scope of supply

INDO GERMAN INDUSTRIES



Air spring Assembly

❖ Air-spring Assembly used for EMU/DMU Coaches & main line / Rajdhani coaches .

The springs are manufactured by TMT – China and assembled at our lab and test as per RSDO Standard. Advantages : Increase in ride comfort irrespective of the load conditions Reduction in structure-borne noise transmission from the bogie to the car body Adjustment of the vehicle height at different loads Stabilization of running dynamics The main purpose of the air spring is to restrict the vibration at a desirable level as per requirements.



There is more ... For items not listed in this Catalog inquire at info@indogermanind.com

Spares under our scope of supply

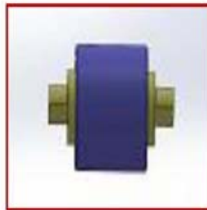
INDO GERMAN INDUSTRIES



MOTER SUSPENSION PAD



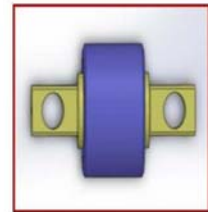
BUSH CONTROL ARM



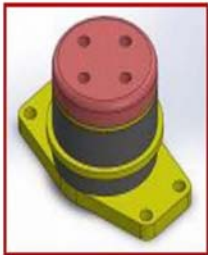
CENTRE PIVOT BUSH



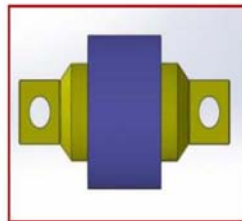
TRACTION ROD BUSH



LATERAL BUMP STOP



MOTER SUSPENSION BUSH



RUBBER PAD PRIMARY SUSPENSION



There is more ... For items not listed in this Catalog inquire at
info@indogermanind.com

Spares under our scope of supply

INDO GERMAN INDUSTRIES



SEALING CAP METRO RAILWAY



RUBBER BUFFER METRO RAILWAY



RUBBER SNUBBER METRO RAILWAY



There is more ... For items not listed in this Catalog inquire at
info@indogermanind.com

Spares under our scope of supply



INDO GERMAN INDUSTRIES

FOR MORE ITEMS PLEASE VISIT

WWW.INDOGERMANIND.COM

IGI@INDOGERMANIND.COM

INFO@INDOGERMANIND.COM



There is more ... For items not listed in this Catalog inquire at
info@indogermanind.com