

Spares under our scope of supply



INDO GERMAN INDUSTRIES



Passenger Car / Carriage Products:

- High Capacity Side Buffer Rubber Pads
- Silent Block for Anchor Link
- Silent Block for Centre Pivot
- Silent Block for Roll Link for Fiata Bogies
- Elastic Connection for Fiata Bogies
- Elasto Bush
- Bump Stopper
- Upper and Lower Rubber washer based on Polyurethane Elastomers



There is more ... For items not listed in this Catalog inquire at [info@indogermanind.com](mailto:info@indogermanind.com)

Spares under our scope of supply

## INDO GERMAN INDUSTRIES

### Passenger Car / Carriage Products:



**Standard Size:** O.D 178 mm

I.D 42 X THK. 112 mm

Capacity: Minimum 1225

Kgm. for a set of 4 springs

Width high damping capacity  
more than 50%

**High Capacity Side Buffer Rubber pads** –  
Used in side buffers of ICF types of coaches

- High capacity more than 1225 kgm.
- Very high damping capacity resulting minimum damaged of buffer assembly component
- High protection of coach under frame members
- Ability to with scan high impacts at higher shunting speed
- Unique design no rubber to rubber contract
- Easy installation and zero maintenance



There is more ... For items not listed in this Catalog inquire at  
[info@indogermanind.com](mailto:info@indogermanind.com)

## INDO GERMAN INDUSTRIES



Torsional stiffness at  $8^{\circ}$   
Deflection :8000-1000 Kgcm,  
Conical stiffness at  $8^{\circ}$   
Deflection: 8000-1000 Kgcm,

**Silent Block for Anchor Link** – Used as a rubber bush fitted in ICF of coaches to facilitate adjustment and reduce noise.

- Ability to endure load under oscillating condition and during rotary movements
- No damage rubber due to excessively large rotary movement due to unique design
- Provide noiseless and comfortable riding of coaches
- Easy to install and almost zero maintenance



Spares under our scope of supply

## INDO GERMAN INDUSTRIES



**Silent Block for Centre Pivot** – Used in the center pivot of coaches

- Ability to endure load under oscillating condition and during rotary movements
- No damage rubber due to excessively large rotary movement due to unique design
- Provide noiseless and comfortable riding of coaches
- Easy to install and almost zero maintenance

Torsional stiffness at  $7^{\circ}$   
Deflection :25000 Kgcmm-  
40000 Kgcmm

Conical stiffness at  $7^{\circ}$   
Deflection: 25000-40000  
Kgcmm,



There is more ... For items not listed in this Catalog inquire at [info@indogermanind.com](mailto:info@indogermanind.com)



## INDO GERMAN INDUSTRIES



**Silent Block for Roll Link for Fiat Bogies -**  
Used as a rubber bush fitted in ICF of coaches to facilitate adjustment and reduce noise.

- Ability to endure load under oscillating condition and during rotary movements
- No damage rubber due to excessively large rotary movement due to unique design
- Provide noiseless and comfortable riding of coaches
- Easy to install and almost zero maintenance



There is more ... For items not listed in this Catalog inquire at [info@indogermanind.com](mailto:info@indogermanind.com)

Spares under our scope of supply

## INDO GERMAN INDUSTRIES



**Elastic Connection for Fiat Bogies** - Used in pairs in newly designed coaches at RCF with German technology.

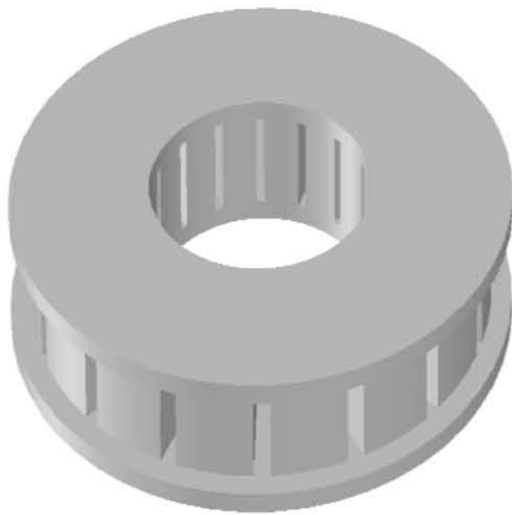
- Elastically guides the wheel set over the axle
- Protect derailment
- Controls the wear of the wheel set at high speed also in the curves
- Provide noiseless and comfortable riding of coaches
- Easy to install and almost zero maintenance



There is more ... For items not listed in this Catalog inquire at [info@indogermanind.com](mailto:info@indogermanind.com)

Spares under our scope of supply

## INDO GERMAN INDUSTRIES



**Upper and Lower Rubber washer based on polyurethane elastomers** - Used as primary suspension of ICF types of bogies of the BG/MG coaches and EMU coaches

- High load bearing capacity
- High shock and noise absorption
- Very good resistance to lubrication oils
- Can withstand
- Varying weather condition without losing the functional performance
- High reliability no maintenance



There is more ... For items not listed in this Catalog inquire at [info@indogermanind.com](mailto:info@indogermanind.com)

## INDO GERMAN INDUSTRIES



**Polyrim for Pully**

**Polyrim for Pully** used for conveyor system of M/S NALCO for carrying BAUXITE ores from MINES to their plant in a span of 14.6 K.M over the hills & vally



**Wearing Piece based Thermoplastic polyurethane** - Used in Side Bearer of coaches

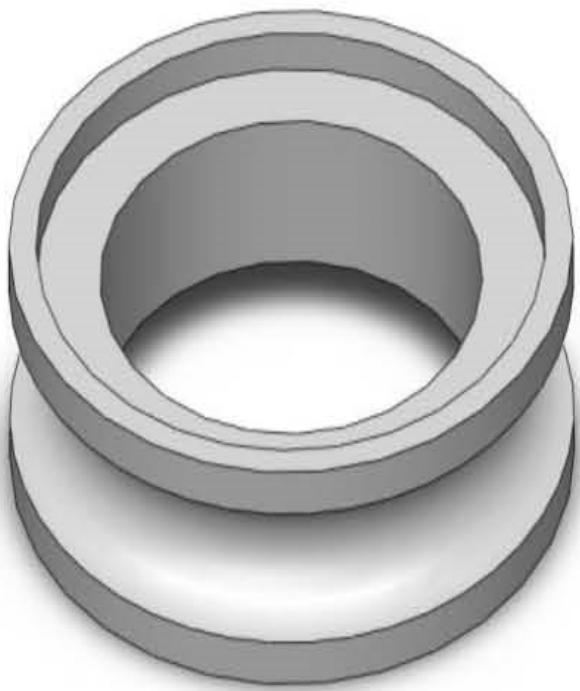
- Light weight with high load bearing capacity
- Less costly than metal
- Good oil and weather resistance
- High wear and tear and resistance





Spares under our scope of supply

## INDO GERMAN INDUSTRIES



**PU PULLY**

**Polyrim for Pully** used for conveyor system of M/S NALCO for carrying BAUXITE ores from MINES to their plant in a span of 14.6 K.M over the hills & vally



There is more ... For items not listed in this Catalog inquire at [info@indogermanind.com](mailto:info@indogermanind.com)

Spares under our scope of supply

## INDO GERMAN INDUSTRIES



**Polyrim for Pully** used for conveyor system of M/S NALCO for carrying BAUXITE ores from MINES to their plant in a span of 14.6 K.M over the hills & vally

## PU PULLY



There is more ... For items not listed in this Catalog inquire at [info@indogermanind.com](mailto:info@indogermanind.com)

Spares under our scope of supply

## INDO GERMAN INDUSTRIES



**Air spring Assembly**

❖ Air-spring Assembly used for EMU/DMUCoaches & main line / Rajdhani coaches .

The springs are manufactured by TMT – China and assembled at our lab and test as per RSDO Standard. Advantages :Increase in ride comfort irrespective of the load conditions Reduction in structure-borne noise transmission from the bogie to the car body Adjustment of the vehicle height at different loads Stabilization of running dynamics The main purpose of the air spring is to restrict the vibration at a desirable level as per requirements.



There is more ... For items not listed in this Catalog inquire at [info@indogermanind.com](mailto:info@indogermanind.com)