

Spares under our scope of supply



INDO GERMAN INDUSTRIES



Locomotive Products

- Side Bearer Pad for WAG7, WAG5, WCM6 Locomotives
- Resilient Bushings for WAG7, WAG5, WCM6 Locomotives
- Anti-vibration Rubber pad
- Suspension Springs
- All Rubber Seamless One - Piece Moulded Traction Motor Bellow
- Cleats of different types
- Liners based on Thermoplastic Polyurethane Elastomers replacing Metal liners
- Spring pad (Happy pad) for secondary suspension for Locomotives based on Thermoplastic Polyurethane Elastomers
- Bearing Adopter pad for Locomotives based on Thermoplastic Polyurethane Elastomers
- Bushes for Locomotives



There is more ... For items not listed in this Catalog inquire at info@indogermanind.com

Spares under our scope of supply



INDO GERMAN INDUSTRIES

LOCOMOTIVE PRODUCTS:



Standard Size: 460mm X
222mm X 180mm

Weight : Approx 40Kg

Standard Size: 355mm X
222mm X 165mm

Weight : Approx 25Kg

Injection Moulded Metal Bonded Side Bearer Rubber Pad - Used for Secondary Suspension of Bogies in Locomotives

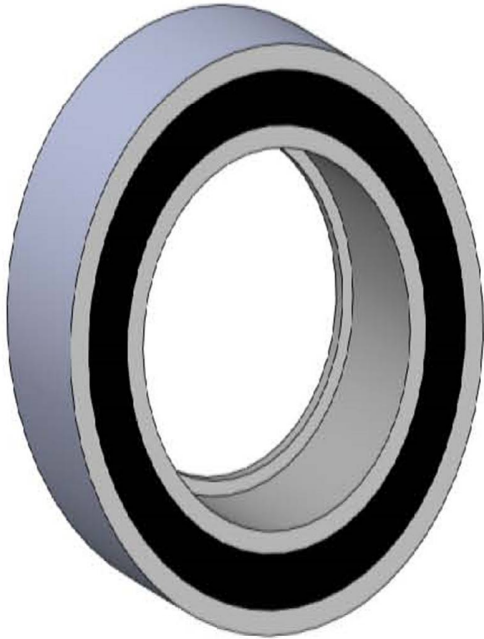
- Accommodate High Compressive & Shear Loads
- Improved riding characteristics
- Absorbs shocks, vibration
- Capability of withstanding wide temperature variation
- Almost maintenance free



There is more ... For items not listed in this Catalog inquire at info@indogermanind.com

Spares under our scope of supply

INDO GERMAN INDUSTRIES



Standard Size: O.D 320mm
I.D 246mm Height : 149mm

Centre Bush - Used in connective device

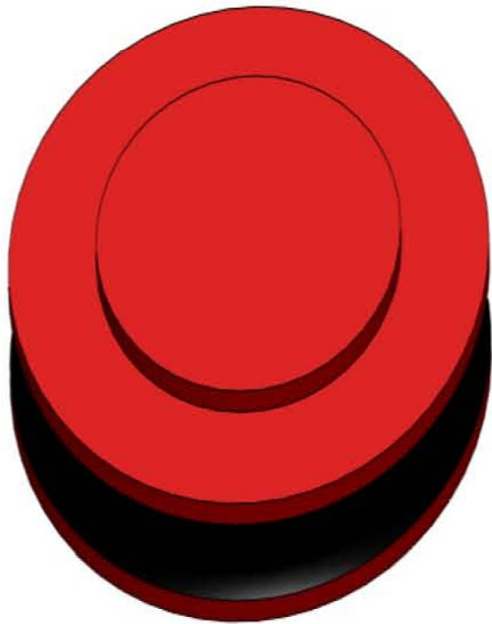
- Absorbs shocks, vibration
- Accommodate torsional & radial motion
- Simple design & operation
- Zero maintenance



There is more ... For items not listed in this Catalog inquire at info@indogermanind.com

Spares under our scope of supply

INDO GERMAN INDUSTRIES



Standard Size: OD 205 mm
Height : 33 mm

Anti-vibration Rubber Pad – Used in conjunction with coil spring in the suspension / traction system of Diesel & Electric Locomotives

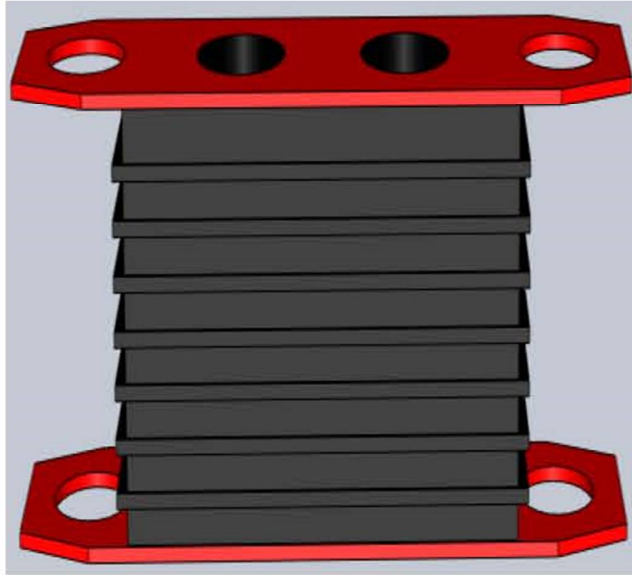
- Absorbs shocks, vibration
- Accommodate motion
- Zero maintenance
- Capable of withstanding varying temperature & weather condition without losing functional properties



There is more ... For items not listed in this Catalog inquire at info@indogermanind.com

Spares under our scope of supply

INDO GERMAN INDUSTRIES



Standard Size: 381 mm X 102mm
X 185 mm

Bonded Rubber Sandwitch Mounting for Nose Suspension of Traction Motor – Used for Traction Motor suspension & held between bogie frame & traction motor nose lugs

- Efficiently isolates, shocks, vibration, accommodate motion providing support to traction motor under compressive & shear loads
- Easy assembling with ease of pre compression
- Almost maintenance free
- Capable of withstanding varying weather condition with out deterioration of functional properties



There is more ... For items not listed in this Catalog inquire at info@indogermanind.com

Spares under our scope of supply

INDO GERMAN INDUSTRIES



All Rubber Seamless One -Piece Moulded Traction Motor Bellow – Used as a type of exclusion seal to convey air from blowers inside the locomotive bodies to the commutated chamber of the traction motor

- No seam, no joint, no fabric reinforcement hence no chance of adhesion failure
- Can withstand extremely stringent condition to resist lubricating grease, oil, heat, flame & extreme weather retaining rotational stiffness
- High air impermeability
- High flexibility very easy installation
- Zero maintenance

Standard size & weight: 445
mm x 342 mm
Weight: 5 Kg.



There is more ... For items not listed in this Catalog inquire at
info@indogermanind.com

Spares under our scope of supply

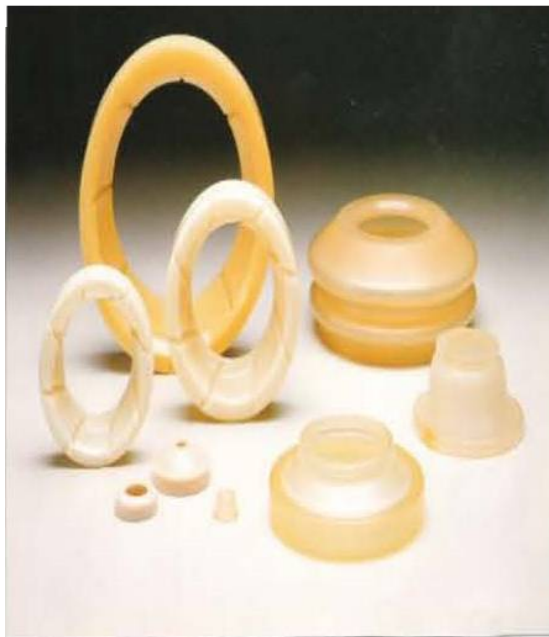
INDO GERMAN INDUSTRIES



Available in Various Sizes

Cleats – Used as insulator for cables for locomotive

- High insulation resistance
- Oil & flame resistance
- Weather & ozone resistance



Break Gear Bush based on Thermoplastic polyurethane - Used in place of nylon bush in the coaches.

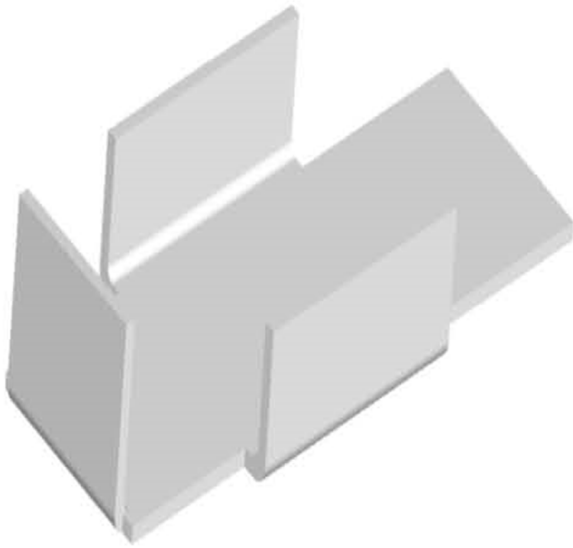
- Better performance
- Higher life
- Better dimensional control



There is more ... For items not listed in this Catalog inquire at info@indogermanind.com

Spares under our scope of supply

INDO GERMAN INDUSTRIES



Available in Various Sizes

Liners for Bogie frame axle box & bogie frame pedestal for high-speed locomotives based on thermoplastic polyurethane elastomers

- Almost five to six times higher life than manganese steel liners
- Light weight
- Excellent friction & wear resistance with adequate flexibility
- Excellent energy absorbing capacity with required deflection
- Easy installation
- Minimum down time for replacement for damaged liner
- Zero maintenance



There is more ... For items not listed in this Catalog inquire at info@indogermanind.com

Spares under our scope of supply

INDO GERMAN INDUSTRIES



Spring Pad (Happy Pad) for secondary suspension for locomotive – Used above & below the helical coil spring used in locomotives

- Reduced fretting enhancing the life of the coil springs
- High load bearing capacity
- Excellent wear & tear resistance
- Excellent oil resistance
- Excellent weather resistance

Standard Size : O.D 225 mm
X ID 120mm X THK 10mm



There is more ... For items not listed in this Catalog inquire at info@indogermanind.com